

THE MOTHS OF INDIA.

SUPPLEMENTARY PAPER TO THE VOLUMES IN

"THE FAUNA OF BRITISH INDIA."

SERIES III, PART III.

BY

SIR GEORGE HAMPSON, BART., F.Z.S., F.E.S.

(Continued from page 478 of this Volume.)

Sub-family ERASTRIANÆ.

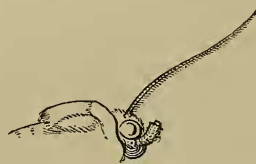
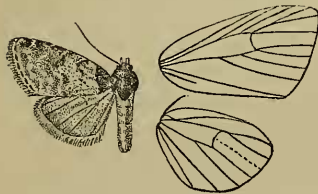
Genus NEACHROSTIA, nov.

Type *N. brunneiplaga*.

Proboscis fully developed; palpi upturned to vertex of head, thickly scaled; the third joint short; frons smooth, rounded; antennæ of male ciliated; meta-thorax with recumbent crest; abdomen without crests. Forewing with vein 3 from well before angle of cell; 4·5 from angle; 6 from upper angle; 7·8 stalked shortly in female; 9 absent; 10·11 from cell. Hindwing with veins 3·4 coincident; 5 almost obsolete from middle of discocellulars; 6·7 shortly stalked; 8 anastomosing with the cell near base only.

2098. *a.* NEACHROSTIA BRUNNEIPLAGA, Swinh., A. M. N. H. (7), xv., p. 500 (1905).

♂. Head and thorax brown almost entirely suffused on dorsum with black



and tinged with grey; palpi black except at tips; abdomen pale brown irrorated with fuscous. Forewing pale ochreous brown irrorated with

Neachrostia brunneiplaga. ♂ $\frac{3}{2}$.

rufous; the basal area black bounded by a waved line; the antemedial area with a glaucous tinge; the antemedial line represented by a black striga from costa and brown striæ in and below cell; a medial line, black towards costa, then brown, incurved in submedian interspace; a small black discoidal lunule; a black patch on costa from middle to near apex, slightly tinged with grey; an indistinct postmedial line excurved at middle and incurved in submedian interspace and with traces of another waved line beyond it; some faint diffused fuscous subterminal patches; a terminal series of black striæ; cilia irrorated with black. Hindwing pale brown with a faint fuscous tinge; cilia ochreous at base; the underside pale irrorated with fuscous, a black discoidal spot and diffused curved postmedial line.

♀. Forewing with the antemedial area pale ochreous.

Habitat.—ASSAM, Khasis. *Exp.* 18 mill.

2101. *d.* NARANGA MACROFLAGA, n. sp.

♀. Head and thorax ochreous white with an olive tinge; palpi fuscous except towards tips; fore tarsi ringed with fuscous; abdomen white slightly tinged with fuscous, the crest on basal segment black. Forewing pale ochreous, sometimes tinged with olive and with slight fuscous irroration; subbasal line represented by a slight oblique striga from costa; some fuscous scales on inner area before the antemedial line which is obsolescent on costal area and highly angled on median nervure, then defined by whitish on inner side and waved, defining an olive patch extending from cell to inner margin defined above by black scales and on outer side by the postmedial line which is obsolescent towards costa, inwardly oblique to vein 4, then excurved, defined by whitish on outer side; an oblique diffused fuscous fascia from termen below apex; a terminal series of black points. Hindwing pale suffused with fuscous; cilia white with a fuscous line through them.

Habitat.—CEYLON (de Mowbray). *Exp.* 20 mill. Type in B. M.

Genus RIVULA insert *Motina*, Wlk., XXVII., 12 (1863). Type *aqualis*.

2103. *c.* RIVULA CYANEPUNCTA, n. sp.

♂. Head and thorax red-brown, the patagia with some purple scales and metathorax with white spot; tarsi banded with black; abdomen fuscous brown. Forewing rufous with an olive tinge with series of silvery purplish points and striæ; a point at base of costa and a short streak below the cell; an antemedial series of points and striæ oblique below costa angled inwards in cell, then oblique to vein 1 and with a point further from base on inner margin; the reniform represented by a rather T-shaped mark on its upper and inner sides and some points on its outer; a postmedial series of points and striæ very strongly bent outwards below costa and angled inwards in discal and submedian folds; an irregular subterminal series of points and small white spot on costa. Hindwing fuscous, the cilia pale rufous; the underside with the inner half whitish, a slight discoidal lunule and curved postmedial line.

Habitat.—BHUTAN (Dudgeon). *Exp.* 24 mill. Type in B. M.

2106. *a.* RIVULA *barbipennis* insert *Motina AQUALIS*, Wlk., XXVII., 12 (1853), which has precedence.

2106. *b.* RIVULA NIVEIPUNCTA Swinh. A. M. N. H. (7), xv. p. 154 (1955).

♂. Legs of male normal.

Head and thorax reddish brown, the metathorax with white spot; abdomen fuscous brown, the anal tuft ochreous white. Forewing reddish brown; subbasal white points on costa and below cell; an antemedial series of points angled inwards in cell and submedian fold; reniform represented by a white lunule with series of points beyond it; a postmedial series of white points bent outwards below costa, excurved to vein 4, then strongly incurved; some white points on costa towards apex; a subterminal series of white points. Hindwing whitish, the inner and terminal areas strongly suffused with brown; the underside whitish, the costal and terminal areas irrorated with brown, a slight discoidal lunule and curved postmedial line.

Habitat.—BHUTAN, ASSAM, Khasis; CEYLON, Puttalam, Haputale; SINGAPORE.
Exp. 16 mill.

2106. *c.* RIVULA FURCIFERA, n. sp.

♂. Pale ochreous; palpi brown at sides, the fringe of hind tibiæ brown at tips. Forewing with red brown patch from cell to inner margin extending from base to near termen and conjoined to a spot in middle of cell and oblique discocellular band extending to costa; a subbasal brown point, some slight marks on costa and a diffused patch of scales on terminal area below apex. Hindwing suffused with fuscous brown.

Habitat.—CEYLON, Pundaloya (Green). *Exp.* 24 mill. Type in B. M.

2106. *d.* RIVULA PLUMIPES, n. sp.

♂. Tibiæ fringed with long hair, the hind tibiæ with immense tufts of hair, black on inner side, and meeting large tufts of long black scales from medial segments of abdomen below; thorax with tufts of ochreous and black hair from below base of wings; hindwing with the inner margin fringed with long hair.

Head and tegulæ grey; thorax red-brown; abdomen ochreous. Forewing grey-brown suffused with red-brown on inner half; the grey area with a purplish tinge and slight dark irroration, the inner margin with some fulvous at middle; black points in cell near base and before middle; an antemedial series of very short black streaks, acutely angled on median nervure; a large brown discoidal ocellus with two black spots on it, the upper one larger, and some black points on its outer edge; a postmedial series of very short black streaks, very strongly bent outwards below costa, then very oblique, incurved below vein 4; an apical black spot and terminal series of points. Hindwing fuscous brown, the hair on inner margin ochreous; the underside paler with dark irroration, a slight discoidal lunule.

Habitat.—CEYLON, Maskeliya (J. Pole). *Exp.* 26 mill. Type in B. M.

2133. *a.* EUBLEMMA ALSTONI, n. sp.

♂. Forewing with the termen strongly excurved at middle and excised above and below middle; hindwing with the termen excurved at middle and excised at submedian fold.

Black; abdomen with some whitish on basal segment. Forewing with traces of black antemedial line with slight whitish mark on it above vein 1; an indistinct black medial line oblique from costa to median nervure, then incurved; traces of a postmedial line with diffused white patch on it from costa to vein 7, a white point beyond it at vein 4, and angled inwards at submedian fold; a diffused white mark on apical part of costa; a black terminal line. Hindwing slightly mixed with grey especially on costal area and disk; traces of waved ante- and postmedial lines; a black terminal line.

Habitat.—CEYLON, Maskeliya (Alston). *Exp.* 24 mill. Type in B. M.

2136. *a.* ZAGIRA BIPARS, n. sp.

♂. Head and thorax fuscous, the scales tipped with grey, the head with some ochreous; thorax ochreous; abdomen dorsally fuscous; pectus, legs and

ventral surface of abdomen fuscous mixed with ochreous. Forewing with the costal area broadly ochreous from inner margin near base to subterminal line, irrorated with fuscous and becoming fuscous at costa; the rest of wing deep black to postmedial line, then fuscous black; postmedial line pale, incurved, from the costal ochreous area to inner margin; a black streak below extremity of the pale costal area and two small triangular marks on its outer edge; a slight greyish subterminal line, incurved below vein 4; some ochreous point on terminal half of costa and a terminal series. Hindwing with the basal area deep black; an irregularly waved medial line with greyish suffusion before and beyond it; the terminal area fuscous black; a sinuous postmedial series of greyish ochreous points, the one in discal fold placed on a small black mark; a terminal series of ochreous points. Underside of forewing with the basal half of costal area suffused with ochreous and with dark discoidal lunule, an oblique subterminal series of whitish points; hindwing with the basal half suffused with whitish, a dark discoidal spot and line from it to inner margin; a sinuous subterminal series of white points.

♀. Thorax and costal area of forewing tinged with pale rufous.

Habitat.—ASSAM, Khasis; N. KANARA, Karwar (T. R. Bell). *Exp.* 36 mill. Type in B. M.

2139. *b.* ZUROBATA ALBISCRIPTA insert (syn.) *Agabra spotha*, Swinh. Cat. Het. Mus. Oxon. II, p. 37, pl. 1, f. 16. Nilgiris.

2139. *a.* ZUROBATA DECORATA, Swinh. A. M. N. H. (7), xi, p. 505 (1903).

Head and thorax white mixed with some fuscous especially on palpi and fore tibiae; a spot on frons and basal joint of antennæ orange; abdomen white, the dorsal surface red-brown except first two segments. Forewing red-brown, some purplish grey with black points on it at base of costa; an antemedial white band with a black lunule on it below the cell, angled outwards and produced to streaks on subcostal and median nervures and with a fine oblique streak from its outer edge in cell to upper angle of cell, a fine discoidal line connecting the ends of streaks; postmedial line oblique and white from costa to vein 6, then indistinct and inwardly oblique; a fine white subterminal line slightly excurved below costa and strongly at middle, the area beyond it suffused with white from below apex and vein 5; a fine white line at base of cilia which are white at apex and vein 5. Hindwing red brown; the base white, a fine oblique sinuous white line from lower angle of cell to inner margin, forking in end of cell; a subterminal white line angled outwards to termen at vein 5.

Habitat.—BHUTAN; SIAM, Muek-Lek. *Exp.* 20 mill.

2145. CORGATHA COSTINOTALIS del. *Capnodes minor*.

2145. *a.* CORGATHA MINOR, Moore Lep. Ceyl. III, p. 212, pl. 174, f. 11.

♂. Bright red-brown; palpi black at tips; vertex of head white. Forewing with white subbasal, antemedial, postmedial and apical spots with the costa between them black and two white points on it towards apex; traces of a waved antemedial line; a black discoidal point; an indistinct curved postmedial

series of points; a series of black points in the inter spaces just before termen, and a terminal series of striæ on veins. Hindwing with small black discoidal spot; an indistinct curved postmedial series of points; a series of black points just before termen and a terminal series of striæ on the veins.

Habitat.—CEYLON; BORNEO, Sarawak. *Exp.* 18 mill.

2145. *b.* CORGATHA ATRIFALCIS, n. sp.

Hindwing falcate, the termen angled at middle; hindwing with the termen rounded.

♀. Pale brownish ochreous slightly irrorated with black. Forewing with the costal edge blackish towards base; an antemedial black point just above median nervure and one on discocellulars; two oblique medial lines from cell to inner margin filled in with fuscous; two oblique postmedial lines from vein 6 to inner margin filled in with fuscous; a double series of obscure fuscous subterminal spots; a series of fuscous points just before termen; the cilia of lobe black; the point just before it white and black. Hindwing with double oblique medial line, the inner strong, black; an indistinct double subterminal line, slightly excurved at discal fold; a series of fuscous points just before termen.

Habitat.—CEYLON, Wattegama (Wackwood). *Exp.* 30 mill. Type in B. M. 2145. *c.* CORGATHA DIPLOCHORDA, n. sp.

♀. Pale brownish slightly irrorated with black; head and tegulæ fulvous. Forewing with antemedial black point in cell and three on discocellulars; a double oblique medial line from cell to inner margin; a double oblique postmedial line from vein 5 to inner margin; an indistinct double subterminal series of fuscous spots; a series of black points just before termen, the terminal area tinged with rufous. Hindwing with black point at lower angle of cell; a double oblique postmedial line; a double subterminal line slightly excurved at middle; a series of black points before termen; both wings with fine terminal line.

Habitat.—ASSAM, Khasis. *Exp.* 24 mill. Type in B. M.

2145. *d.* CORGATHA TRICHOGLYIA, n. sp.

♂. Femora and tibiæ fringed with hair, the mid and hind tibiæ with extremely long hair.

Purplish red-brown; palpi and frons black; antennæ with some white on basal half of shaft above; legs ochreous. Forewing with subbasal, antemedial and medial black spots on costa; antemedial points on median nervure and vein 1; a large discoidal spot; some pale points on costa towards apex; a terminal series of black points. Hindwing with black discoidal point; traces of a curved postmedial series of white points; a terminal series of black points.

Habitat.—CEYLON; Pundaloya (Green). *Exp.* 18 mill. Type in B. M.

2146. *e.* CORGATHA ALBIVERTEX, n. sp.

♂. Red-brown; palpi and frons blackish; vertex of head pure white; metathorax and segmental bands on abdomen blackish. Forewing irrorated

with black; waved black antemedial, indistinct medial, postmedial and subterminal lines, the postmedial bent outwards from below costa to vein 4 and slightly angled inwards in discal fold; a discoidal point and a terminal series. Hindwing irrorated with black; traces of an antemedial line; a discoidal point; a postmedial minutely dentate line angled outwards at vein 4; a subterminal waved line and a terminal series of points.

Habitat.—CEYLON, Puttalam, Matéle (Pole). *Exp.* 20 mill. Type in B. M.
1407. d. *TOLPIA MELANOSTICTA*, n. sp.

♂. Head and thorax grey mixed with fuscous; palpi blackish except at tips; tarsi banded with black; abdomen fuscous. Forewing grey-white irrorated with fuscous; subbasal line strong, black, oblique from costa to submedian fold; antemedial line double, waved, with black patches on outer side at costa and submedian folds; an indistinct medial line on costal and inner areas with black mark beyond it on costa; a small elliptical white discoidal spot defined by black; the terminal area with three very ill-defined waved lines crossed by two short black streaks in discal fold, the upper rather nearer termen, and two small black marks in submedian fold; a terminal series of black points. Hindwing fuscous brown; the underside greyish with discoidal bar and curved postmedial line.

Habitat.—MADRAS, Palnis (Campbell). *Exp.* 20 mill. Type in B. M.
1407. e. *TOLPIA LEUCOPIS*, n. sp.

Head, thorax and abdomen dull brown; tarsi with pale rings; tegulae darker. Forewing pale brown suffused and irrorated with dark-brown; subbasal line represented by a black point on costa; ante- and postmedial lines waved, with black points at costa; a small whitish discoidal spot defined by black; the terminal area rather darker with ill-defined sinuous whitish subterminal line; a terminal series of black points. Hindwing pale fuscous; the underside with discoidal spot.

Habitat.—PUNJAB, Dharmsala (Hocking); ASSAM, Margherita (Doherty); MADRAS, Palnis, Kodai Kanel (Campbell); CEYLON, Hambantota (Pole). *Exp.* 12 mill. Type in B. M.

1407. f. *TOLPIA MYOPS*, n. sp.

♀. Head and thorax red-brown; abdomen pale brown with the dorsal crest at base black. Forewing red-brown more or less strongly suffused with fuscous; the subbasal, ante-medial, postmedial and subterminal waved lines very obscure and diffused; a small white discoidal spot surrounded by black scales; a terminal series of black points. Hindwing yellowish white suffused with brown or fuscous towards termen; the underside with discoidal spot and interrupted diffused postmedial line.

Habitat.—CEYLON, Puttalam, Bogawantalawa (Pole). *Exp.* 18 mill. Type in B. M.

1407. g. *TOLPIA PLUMBIFUSA*, n. sp.

♀. Head and thorax leaden fuscous; abdomen fuscous. Forewing leaden fuscous sparsely irrorated with black, ill-defined antemedial, medial and

postmedial rufous bands; an indistinct subterminal line angled outwards at vein 7 and excurved at middle. Hindwing pale fuscous.

The specimen from Sikkim is reddish-brown, the head and tegulæ dark; forewing with the leaden fuscous suffusion confined to the basal costal area, the medial and terminal areas.

Habitat.—SIKKIM (Pilcher); CEYLON, Maskeliya (Pole). *Exp.* 14 mill. Type in B. M.

1407. *h.* *TOLPIA BILINEATA*, n. sp.

Head, thorax and abdomen brownish tinged with fuscous; abdomen with black basal crest. Forewing pale brownish suffused and irrorated with fuscous; the ante-, the inner medial and postmedial areas more or less distinctly paler; subbasal line dark, from costa to submedian fold; antemedial line dark angled outwards on median nervure; postmedial line curved from costa to submedian fold where it is angled inwards, then oblique to inner margin; a small whitish lunule at lower angle of cell with dark points beyond it; an ill-defined sinuous grey subterminal line defined by fuscous suffusion on each side; a terminal series of dark striæ. Hindwing pale yellowish more or less strongly tinged with brown on terminal area; the underside with black discoidal spot.

Habitat.—CEYLON, Maskeliya (Pole), W. Haputale, Horton Plains (Mackwood). *Exp.* 16-18 mill. Type in B. M.

1407. *i.* *TOLPIA BIPARS*, n. sp.

Palpi ochreous, black at sides; head and thorax white, antennæ black; tegulæ ochreous; patagia with leaden grey patches; legs black and grey; abdomen ochreous dorsally suffused with fuscous. Forewing with the basal area white irrorated with a few brown scales; a black-edged leaden grey patch at base of costa; a curved black line bounding the basal area with a broad leaden grey band beyond it extending to the red-brown medial line; the terminal half leaden grey and white with wavy rufous postmedial line and indistinct sinuous subterminal line; a few large black scales on the rufous lines. Hindwing yellowish white suffused with fuscous brown, especially towards termen; the underside with discoidal spot and traces of postmedial line on costal area.

Habitat.—CEYLON, Bogawantalawa (Pole). *Exp.* 14 mill. Type in B. M.

2161. *a.* *MICRÆSCHUS ATRICINCTA*, n. sp.

♂. Head, thorax and abdomen pale brown slightly tinged with crimson; vertex of head and base of shaft of antennæ white. Forewing pale brownish flesh colour irrorated with crimson and a few dark scales; the costal and terminal areas black, expanding at apex; antemedial line crimson with a white point at costa, wavy, a slight discoidal point; postmedial line crimson with black points at the veins and white point at costa, dentate, obliquely excurved from costa to vein 4, then strongly incurved, some white points beyond it on costa; cilia orange. Hindwing pale brownish flesh colour irrorated with crimson and a few dark scales; a discoidal crimson lunule and curved wavy postmedial line; terminal black band; cilia orange. Underside greyish.

Habitat.—CEYLON, Maskeliya (Pole). *Exp.* 16 mill. Type in B. M.

2162 a. *MICRÆSCHUS OINISTIS*, n. sp.

♂. Head, thorax and abdomen vinous red and whitish; shaft of antennæ and a band between their bases white. Forewing whitish tinged with vinous red and irrorated with fuscous; an indistinct antemedial line from cell to inner margin; an oblique line from costa to lower angle of cell; a diffused blackish discoidal spot; traces of a postmedial line excurved from costa to vein 4, then incurved; the terminal area slightly darker with traces of a pale waved subterminal line; some dark points on termen. Hindwing purplish red; the postmedial line represented by a white bar on inner margin; cilia whitish at tips.

Habitat.—CEYLON, Kandy (Pole), Yatiyantota (Green). *Exp.* 14 mill. Type in B. M.

2164. c. *MICRÆSCHUS PURPURASCENS*, n. sp.

♂. Deep purplish pink; palpi, frons and forelegs brown; vertex of head and shaft of antennæ above pure white; ventral surface of abdomen and anal tuft yellow. Forewing with traces of an antemedial line; an indistinct postmedial line very oblique from costa, excurved to vein 4, then incurved, the area between the lines rather darker; the costa except at base and between the lines white. Hindwing with postmedial line oblique from costa to vein 3, then incurved, the area beyond it rather paler; both wings with the termen and cilia orange yellow.

Habitat.—CEYLON, Kandy (Pole). *Exp.* 16 mill. *Type* in B. M.

2164. d. *MICRÆSCHUS POLIORHODA*, n. sp.

Head, thorax and abdomen grey mixed with purplish crimson, the vertex of head pure white. Forewing grey irrorated with purplish pink; some ochreous points on costa; traces of a pink antemedial line; a slight dark discoidal lunule; a faint medial line from lower angle of cell to inner margin; a minutely waved postmedial line oblique from costa to vein 6, incurved below vein 4 and excurved at vein 1; traces of a subterminal line; termen purplish pink; cilia yellow. Hindwing grey irrorated with purplish pink; a small black discoidal lunule; a rather diffused postmedial line defined by whitish on outer side; an indistinct minutely waved grey subterminal line; termen purplish pink; cilia yellow.

Habitat.—CEYLON, Gampola (Mackwood), Kandy (Pole). *Exp.* 14 mill. Type in B. M.

STICTOPTERINÆ.

2298. a. *GYRTONA NAMA*, Swinh., A. M. N. H. (7), vii., p. 492 (1900).

♀. Head and thorax red-brown and black with a few white scales; a white stripe on frons and vertex of head; tibiæ and tarsi fuscous ringed with white; abdomen fuscous, the anal tuft ochreous at sides. Forewing dark purplish grey with numerous waved lines; a more distinct medial line angled in and below cell; the tufts of scales below middle of cell dark; the reniform defined by tufts of white and dark scales; the postmedial line distinct, double, strongly bent outwards below costa and below vein 4 very oblique, two black marks and white lunules on it below costa followed by an apical white

V-shaped mark and with a white spot beyond it at vein 5 ; some white points on costa towards apex and a terminal series ; cilia chequered rufous and black. Hindwing dark brown, the interspaces of basal half hyaline ; cilia pale with a brown line at base.

Habitat.—ASSAM, Jaintia Hills. *Exp.* 30 mill.

SARROTHRIPINÆ.

2222. *a.* *BLENINA AQUISOIDES*, Swinh., A. M. N. H. (7), xv., p. 156 (1905).

Head brown, the vertex white ; thorax brown mixed with white, the tegulæ brown at base white at tips ; tarsi with white rings ; abdomen brown, the ventral surface whitish. Forewing white suffused with dark brown except on basal and apical areas ; the medial area suffused with purplish fuscous irrorated with irridiscent scales except on costal area ; subbasal line represented by a dark striga from costa ; traces of oblique antemedial and medial lines from cell to inner margin ; postmedial line slightly waved, oblique from costa to vein 6, excurved to vein 3, then inwardly oblique ; some black points on costa towards apex ; an ill-defined irregularly dentate subterminal line, angled outwards at vein 7 and excurved at middle ; termen brown ; cilia chequered white and brown. Hindwing pale brown, the costal area whitish, the underside whitish tinged with brown, especially on the veins and terminal area.

Habitat.—ASSAM, Khasis. *Exp.* 32 mill.

2223. *a.* *BLENINA FUMOSA*, Swinh., A. M. N. H. (7), xv., p. 157 (1905).

♀. Head and thorax dull sap-green suffused with brown, tegulæ black at base and with brown medial line ; abdomen dull brown. Forewing pale purplish brown largely suffused with sap-green and irrorated with blue-black scales, the medial area suffused with black ; an indistinct waved subbasal line from costa to vein 1 ; an indistinct oblique antemedial line, waved below the cell ; postmedial line indistinct, waved, slightly bent outwards below costa and angled inwards in submedian fold, where there are two slight oblique black streaks beyond it ; subterminal line indistinct, minutely waved, slightly angled outward at vein 7 and excurved at middle, then angled inwards and with short black streak beyond it. Hindwing blackish brown with oblique sinuous pale postmedial band ; termen at middle pale rufous with some black points on it ; cilia pale rufous with fuscous line through them. Underside of both wings pale rufous, the basal half suffused with fuscous, the terminal half with black, a sinuous ochreous brown postmedial band.

Habitat.—ASSAM, Khasis. *Exp.* 46 mill.

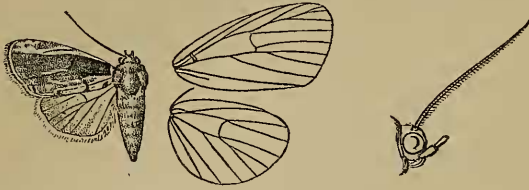
Genus APOTHRIPA, nov.

Type *A. iphida*.

Palpi upturned, the 2nd joint not reaching vertex of head, the 3rd moderate ; antennæ of male ciliated. Forewing with veins 3, 4 stalked, 5 from above angle of cell ; 6 from just below upper angle ; 7, 8, 9, 10 stalked ; 11 from cell. Hindwing with veins 3, 4 stalked ; 5 from angle of cell ; 6, 7 from upper angle ; 8 anastomosing with the cell to middle.

2236. c. APOTHRIPA IPHIDA, Swinh., A. M. N. H. (7), vii., p. 490 (1901).

♂. Head and thorax rufous mixed with white; pectus, legs and abdomen



whitish. Forewing purplish red tinged with fuscous towards base; the costal area whitish, tinged with olive except towards base; the inner

Apothripa iphida. ♂ $\frac{5}{4}$

area whitish to beyond middle; a white spot at base of costa; a dark subbasal spot on inner margin; the antemedial line indistinct on costal half, oblique from costa to median nervure where it is angled; a dark discoidal lunule; the postmedial line very oblique towards costa, then indistinct, below vein 3 white and acutely angled inwards in submedian fold, a dark spot on its inner side at inner margin; an indistinct subterminal line. Hindwing white, the veins and terminal area tinged with brown.

Habitat.—ASSAM, Jaintia Hills. *Exp.* 24 mill.

2249. b. DILOPHOTHRIPA LOBATA, n. sp.

♂. Hindwing with the tuft below costa thin and whitish, the tornus with large rounded tuft of cilia forming a lobe, but no tuft on upperside.

Head and thorax dark brown mixed with grey; abdomen whitish tinged with reddish brown. Forewing grey suffused with reddish brown; an oblique whitish band on costal half between the subbasal and antemedial lines, the costal half beyond the latter suffused with fuscous; subbasal line oblique, wavy, whitish from costa to submedian fold; antemedial line very slightly wavy, oblique from costa to below cell, then erect, defined by grey on outer side; two obliquely placed black points on discocellulars; postmedial line minutely dentate, oblique from costa to vein 7, slightly incurved in discal fold and strongly below vein 3, defined by grey on inner side; a grey subterminal line angled outwards at vein 7 and excurved at middle; a terminal series of black points defined by grey. Hindwing brown with a reddish tinge, the tuft at tornus fuscous at tips.

Habitat.—KHASIS. *Exp.* 18 mill. Type in B. M.

2449. c. DILOPHOTHRIPA ALOPHA, n. sp.

♂. Hindwing with thick brown pencil of hair below costa, the cilia at tornus slightly thickened but not lobed.

Head and thorax dark brown mixed with grey; abdomen whitish tinged with brown. Forewing whitish suffused with fuscous grey, leaving an oblique whitish band on costal half between the subbasal and antemedial lines, the costal half beyond the latter fuscous; an obliquely excurved slightly wavy sub-basal line, with a fuscous patch before it at base; antemedial line slightly wavy, oblique from costa to below cell, then erect; two obliquely placed black points beyond it in submedian interspace and two on discocellulars; postmedial line minutely dentate, oblique from costa to vein 7, slightly incurved

at discal fold and strongly below vein 3; a grey subterminal line defined on each side by fuscous, angled outwards at vein 7 and excurved at middle; a terminal series of black points. Hindwing grey suffused with brown.

Habitat.—TENASSERIM, Mergui (Doherty). *Exp.* 20 mill. Type in B. M.

2249. *d.* DILOPHOTHRIPA BRACHYTORNA, n. sp.

♂. Hindwing with thin whitish pencil of hair below costa, the cilia slightly thickened at tornus but not lobed.

Head and thorax fuscous brown slightly mixed with grey; abdomen pale brown. Forewing fuscous brown mixed with grey; an oblique minutely waved subbasal line, defined by grey on inner side; the antemedial line obliquely curved, slightly waved and defined by grey on outer side; two obliquely placed black points beyond it in submedian interspace and two on discocellulars; postmedial line minutely dentate, oblique from costa to vein 7, slightly incurved at discal fold and strongly below vein 3, defined by grey on inner side; subterminal line grey, somewhat dentate, angled outwards at vein 7 and excurved at middle, a terminal series of black points. Hindwing grey-brown.

Habitat.—CANARA, Karwar (T. R. Bell). *Exp.* 18 mill. Type in B. M.

2253. SARROTHRIPA POLIOPHÆA, n. n.

Sarrothripa nolalella, Hmps. Moths., Ind., II., p. 388 (nec Wlk.).

Habitat.—ASSAM, Khasis; BOMBAY, N. Canara; CEYLON, Dickoya.

ACONTIANÆ.

2186. *e.* METAPTAYA ENDOPLAGA, n. sp.

♂. Head and thorax whitish tinged with pale brown and slightly irrorated with fuscous; palpi behind and sides of frons blackish; metathoracic crest tipped with blackish; fore tarsi blackish with pale rings; abdomen white dorsally tinged with brown. Forewing white tinged with rufous and slightly irrorated with fuscous; a blackish patch on the lobe of inner margin; traces of a curved antemedial line; two faint discoidal points; postmedial line rather diffused, brown defined by whitish on outer side, excurved from costa to vein 4, then incurved; subterminal line represented by a series of dark points, excurved below costa and at middle, then incurved; some dark points on costa towards apex. Hindwing brownish white with slight dark postmedial line ending in a black point on inner margin, the terminal area suffused with fuscous.

Habitat.—MADRAS, Bellary, Ramandrug, 3000' (Campbell). *Exp.* 22 mill. Type in B. M.

Under *Pseudocalpe* insert.

Type.

ARCYOPHORA, Guen. Noct. II. p. 378 (1852), which has

precedence *longivalvis*.

Setoctena, Wlgrn. Wien. Ent. Mon., VII., p. 144 (1863)... *ledereri*.

Euxestis, Led. Hor. Soc. Ent. Ross., VI., p. 88 (1869) ... *mesogona*.

2655. *a.* ARCYOPHORA BOTHROPHORA, n. sp.

♂. Antennæ with long bristles and cilia; forewing on underside with fan of scales at upper angle of cell; veins 6·7 somewhat approximated and forming ridges with a narrow groove between them for half their length.

Head and thorax brown tinged with purplish fuscous; pectus, legs and abdomen pale ochreous, the fore legs tinged with fuscous. Forewing reddish brown suffused with purplish fuscous; an oblique rufous antemedial line with ill-defined dark spot on its outer side in cell, and outwardly defined by blackish towards inner margin; a slight obliquely curved rufous postmedial line defined by blackish on inner side; a punctiform blackish subterminal line, slightly angled outwards at vein 7 and incurved at discal and submedian folds; cilia dark-brown with slight whitish tips. Hindwing ochreous white, the veins and terminal area tinged with brown.

Habitat.—CEYLON, Uva, 3500' (Alston). *Exp.* 22 mill. Type in B. M. 1510. EARLIAS CHROMATARIA.

Larva dark slate grey with dull white dorsal line obsolete towards head and anal somite; a sublateral whitish line from 1st to 5th and 10th to 12th somites; the 2nd to 11th somites with subdorsal transverse orange oblong patches each bearing two black spots on their upper edge and one black spot on their lower. Head and legs fiery. Food plant the rolled up young leaves of *Salix babylonica*.

Pupa in a close fitting cocoon with conical projection at anterior end where it opens for moth to emerge, formed of brown cilia (Dudgeon).

2211. *a.* LABANDA VIRIDALIS, Swinh., A. M. N. H. (7), xv., p. 156 (1905).

Head and thorax sap-green mixed with fuscous, tegulae with tufts of ochreous white hair below; pectus and legs brownish white, the apex with tufts of ochreous hair, the tarsi fuscous banded with ochreous; abdomen whitish thickly irrorated with fuscous, greenish towards extremity, the dorsal crests dark, of male very long and slender. Forewing sap-green irrorated with white and a few black scales; the basal area, the middle of costal area, the postmedial area to vein 4 and the apical part of costal area suffused with black; subbasal line wavy, from costa to submedian fold, on a diffused green band; an oblique wavy antemedial line with some white between it and the dark basal area; a prominent black discoidal lunule; postmedial line minutely dentate, oblique from costa to vein 4, then inwardly oblique and angled inwards in submedian fold; some white points on costa towards apex; subterminal line oblique from costa to termen below apex and defined by white above, a small dentate black mark below vein 7 and larger mark below 6, then interrupted, wavy and angled inwards in submedian fold; a terminal series of blackish points; cilia chequered fuscous and brownish. Hindwing dull brown.

Habitat.—ASSAM, Khasis; MALACCA, Dinding I. *Exp.* 28-32 mill.

2328. *a.* TYMPANISTES FLAVESCENS, Swinh., A. M. N. H. (7), xv., p. 158 (1905).

♂. Head and thorax ochreous tinged with olive brown; abdomen pale red, the ventral surface whitish. Forewing ochreous irrorated with pale red, the costal area greenish irrorated with fuscous; an ill-defined antemedial line oblique from costa to median nervure when it is angled, terminating at submedian fold; a discoidal point; a dentate postmedial line, bent outwards below costa, angled inwards in discal fold and incurved between veins 4 and 1; a

dentate subterminal line angled inwards above vein 7, bent inwards between veins 6 and 4 and below vein 3; a terminal series of black points. Hindwing yellowish white, the inner half suffused with pale red.

Habitat.—Khasis. *Exp.* 40 mill.

2334. a. CAREA DIONE, Swinh., A. M. N. H. (7), xv., p. 159 (1905).

Head and thorax purple brown, the vertex of head, tegulæ and patagia suffused with dark olive green; pectus and legs pale; abdomen pale purplish brown, the ventral surface whitish. Forewing pale purplish brown suffused with olive green, especially at base, on medial area from costa to vein 2 and on apical area; oblique olive lines from costa before middle to middle of inner margin and from vein 6 beyond middle to inner margin towards tornus; cilia rufous except towards tornus. Hindwing whitish tinged with pale red the inner area slightly with fuscous.

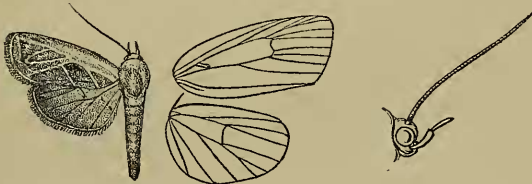
Habitat.—ASSAM, Khasis. *Exp.* ♂ 38, ♀ 40 mill.

Genus PLAGIOGRAPTA, nov.

Palpi upturned, slended, the 2nd joint reaching vertex of head, the 3rd long; antennæ of male almost simple; tibiæ with the spurs long; abdomen long and slender. Forewing long and narrow; veins 3 and 5 from near angle of cell; 6, 7 from upper angle; 8, 9, 10 stalked from before angle; 11 from cell; the retinaculum bar-shaped. Hindwing with veins 3, 4 on a long stalk; 5 from angle of cell; 6, 7 from upper angle; 8 anastomosing with cell to middle.

2342. a. PLAGIOGRAPTA MACRODONTA, n. sp.

Head, tegulæ and front of thorax white, the rest of thorax and abdomen



Plagiograptia macrodonta. ♂ $\frac{5}{4}$

grey-brown. Forewing grey-brown; a broad white fascia from base through the cell, its edges rather irregular, a very oblique ante-medial white line from it to inner margin; a white streak on median nervure continued to termen above tornus and giving off an oblique medial line to inner margin and a streak on vein 3 to termen joined by oblique streaks from upper angle of cell and costa beyond middle crossing a streak from upper angle of cell to apex; a fine subterminal white line straight from costa to vein 3, then bent inwards to the streak running to above tornus. Hindwing fuscous brown.

Habitat.—CANARA, Malmani (T. R. Bell). *Exp.* 24 mill. Type in B. M.

CATOCALINÆ.

2516 a. OPHIUSA PALLESCENS, Wlk., Journ. Linn Soc., VII., p. 179 (1864).

Lagoptera violetta. Pag. Abh. Senck. Ges. 1897, p. 449, pl. 20, f. 13.

Head grey-brown; thorax pale grey; abdomen pale ochreous, the ventral surface tinged with red-brown. Forewing pale violaceous grey irrorated with

black, the costal edge brownish ; an indistinct highly sinuous antemedial brown line ; orbicular represented by a black point ; reniform small, dark brown, produced to an oblique point above ; an indistinct oblique medial shade beyond the cell bent inwards to costa and outwards to inner margin ; postmedial line indistinct, waved, excurved from costa to vein 6, then oblique and bent outwards to inner margin ; an indistinct minutely waved subterminal whitish line, excurved below costa and at middle, stronger towards inner margin, with a dark brown patch before it between vein 7 and 5 and some brown suffusion beyond it from below apex to vein 3 ; a subterminal series of black points. Hindwing ochreous whitish, the inner area brownish ochreous, the termen whiter ; a black subterminal band with waved edges, very broad towards costa, narrowing to a point and indistinct towards tornus ; terminal area tinged and irrorated with brown towards tornus. Underside of forewing with black discoidal bar and postmedial line with diffused black beyond it except towards costa ; hindwing ochreous brownish with slight dark irroration, an indistinct dentate postmedial line on costal half and series of black points just before termen.

Habitat.—Khasis ; Singapore ; BORNEO, Kuching, Sarawak. *Exp.* 90 mill.
2348. a. CETOLA RUBRICOSTA, n. sp.

♂. Antennæ bipectinate with moderate branches, the apical part serrate. Head purplish rufous ; antennæ ochreous ; tegulæ and thorax black brown ; patagia ochreous suffused in parts with purplish rufous ; pectus and legs purplish rufous ; abdomen ochreous ; the dorsal crests on basal segments blackish, the medial segments subdorsally and ventral surface suffused with purplish rufous. Forewing ochreous ; the base slightly tinged with pink ; the costal area and upper part of cell suffused with purplish red to near apex towards which it becomes much darker and with some black streaks below costa, an indistinct highly dentate subbasal black line from costa to submedian fold ; an indistinct double antemedial line from cell to inner margin, angled outwards in submedian fold and inwards on vein 1 ; the inner margin tinged with olive except towards base ; orbicular and reniform whitish tinged with purplish pink and defined by blackish above, the former rather elongate elliptical, the latter somewhat bilobed below and with some olive suffusion below it and in lower part of cell before and between orbicular ; postmedial line indistinct, pale, strongly bent outwards below costa and oblique below vein 4, angled inwards in submedian fold to the antemedial line, some white points beyond it on costa ; an oblique olive shade from termen below apex interrupted by two whitish streaks with some dark scales on them ; an oblique olive shade from termen at vein 4 to submedian fold with some slight whitish and dark subterminal mark on it ; a slight double olive lunule at termen. Hindwing semi-hyaline white ; the apex and vein 7 towards termen tinged with purple brown ; the inner area and cilia ochreous ; a terminal series of slight ochreous points.

Habitat.—CEYLON ; N. Central Province (Alston). *Exp.* 46 mill.

2526. a. • *HYPÆTRA RUINOSA*, Swinh., A. M. N. H. (7), xv., p. 159 (1905).

Head and thorax dark red-brown, slightly irrorated with ochreous; pectus pale; tarsi with ochreous rings; abdomen fuscous brown, the crest at base rufous, the ventral surface whitish. Forewing rufous more or less suffused with purplish fuscous, especially on basal and terminal areas; subbasal line black-brown, waved, from costa to submedian fold; antemedial line indistinct except at costa, oblique, waved; traces of an obliquely curved, waved medial line; postmedial line strongly angled outwards below costa, strongly incurved between veins 6 and 4 and with black-brown patch in its sinus, then oblique waved, forming a small spot below vein 3 and double below vein 2; subterminal line minutely and irregularly waved, forming a series of small spots; some ochreous points on costa towards apex; a fine waved terminal line with series of ochreous points in the interspaces. Hindwing dark brown; an oblique double postmedial line, more prominent and filled in with rufous above and below submedian fold; cilia with two white patches near apex and one near tornus; the underside fuscous brown with obliquely curved medial line with some black spots on it.

Habitat.—ANDAMANS; SINGAPORE; BORNEO, Kuching. *Exp.* 42-48 mill.

MOMINÆ.

P. 435. *MOMA GRACILIS*, Swinh. Cat. Het. Mus. Oxon. II., p. 101, pl. iii. f1, = *M. CAVILLATOR*, Wlk., from Mexico, not India.

PLUSIANÆ.

2672. *PLUSIA labifera* insert *Apamea SELECTA*, Wlk. XXXII, p. 646, which has precedence.

NOCTUINÆ.

P. 354.—Under *DINUMMA* insert (syn.) *Ortheaga*, Wlk., XXXIII, p. 927 (1865). Type *combusta*.

2167. a. *DINUMMA COMBUSTA*, Wlk., XXXIII, p. 928 (1865).

Head and thorax fuscous brown irrorated with grey; pectus, legs and abdomen grey tinged with fuscous, the dorsal crests blackish. Forewing pale red-brown slightly suffused and irrorated with fuscous, the patch at base of costa and medial area hardly darker; an oblique waved antemedial line; a slight dark discoidal mark; postmedial line slightly waved, oblique from costa to vein 5 where it is angled, then inwardly oblique; traces of a pale subterminal line incurved to costa; small black spots before termen at veins 6 and 2 with slight metallic blue points above and below them. Hindwing pale fuscous brown; a fine pale line at base of cilia.

Habitat.—CEYLON, Uva 600; JAVA. *Exp.* 26-34 mill.

2193. b. *HOMODES IRRITATA*, Swinh., A. M. N. H. (7), xv., p. 155 (1905).

Head and tegulæ purplish red; thorax yellow and fiery red mixed; abdomen yellow suffused with fiery red at base, purplish red towards extremity; pectus, legs and ventral surface of abdomen yellow. Forewing orange irrorated with red-brown; the costal area purplish red; some silver scales below base of costa; the lines arising from just below costa, red irrorated with silvery

scales, the antemedial and medial lines incurved to costa, the postmedial line double, the outer line without silver scales, oblique from costa to vein 6 and slightly incurved at discal and submedian fold; subterminal line with more prominent silver striæ on it, defined by fiery red on inner side incurved to costa and produced to minute dark streaks on the veins; a series of fine black lunules just before termen and a fine waved terminal line; cilia purplish red. Hindwing orange irrorated with red-brown; the antemedial and postmedial lines irrorated with silver scales, arising from below costa, the former obliquely curved, the latter double, waved, the outer line without silver scales; subterminal line with more prominent silver spots, defined by fiery red on inner side and produced to short streaks on the veins on outer; a series of fine black lunules just before termen and a fine waved terminal line. Underside yellow, the forewing except inner area and the costal and terminal areas of hindwing suffused with red.

Habitat.—ASSAM, Khasis; SINGAPORE. *Exp.* 32 mill.

2421. *Polydesma VETUSTA* belongs to HOMOPTERA, Sect III.

2432. *POLYDESMATA BIFORMIS*.

Larva 1·3"—1·5". Head glabrous, red; body black irrorated with white and covered with grey hair; a very broad dorsal white stripe interrupted at 5th, 7th, 11th and 12th somites by thick tufts of buff-colored hair; a series of red lateral tubercles with a narrow white stripe below them with fine crenulate red line on its upper edge; prolegs all present, reddish; when mature the buff hairs become black and there are grey lines on the dorsal stripe. Forms a cocoon among leaves (W. H. Campbell).

2432. *a.* *POLYDESMATA PRASINA*, Swinh., A. M. N. H. (7), xii, p. 99 (1903).

♀. Head and thorax bright apple-green mixed with a few brown scales; antennæ brown with pale ridges of scale above; palpi brown; the extremities of 2nd and 3rd joints pale; pectus and legs pale and brown, fore femora and tibiæ with tufts of green hair, the tarsi ringed with white; abdomen ochreous white irrorated with brown, the dorsal crests green, the anal tuft fulvous. Forewing bright apple green; an irregular triangular brown subbasal patch on costa extending to submedian fold; a rather indistinct waved antemedial line angled inwards on median nervure; orbicular a small round whitish spot; reniform indistinctly defined by white; an irregular triangular brown patch on middle of costa; an irregularly waved postmedial line with a diffused waved band of brown scaling before it from vein 5 to inner margin; a minutely waved subterminal line, incurved from costa to vein 4, then oblique and angled inwards on veins 2 and 1, a large patch of diffused dark scaling beyond it on apical area, some subterminal marks and a small patch in submedian fold; a waved terminal line; cilia brown mixed with green. Hindwing fuscous, the inner area paler, a subterminal and series of slight white mark cilia ochreous white with a dark line through them; the underside pale suffused and irrorated with fuscous, a slight discoidal lunule and diffused postmedial and subterminal bands.

Habitat.—ASSAM, Jaintia Hills. *Exp.* 44 mill.

2450. *b.* MELIPOTIS ANKARA, Swinh., A. M. N. H. (7), vi, p. 311.

♀. Ochreous grey irrorated with fuscous. Forewing with waved antemedial dark line; a discoidal lunule with spot on costa just before it; a waved postmedial line bent outwards from below costa to vein 4 and arising from a costal spot; a diffused sinuous subterminal band with a large black spot just beyond it on costa and a small spot at vein 4; a fine crenulate terminal line. Hindwing ochreous white; the basal area tinged with fuscous; a narrow medial fuscous band and a broad terminal band.

Habitat.—Quetta. *Exp.* 40 mill.

P. 481. Under CATEPHIA insert IDICARA, Wlk. Journ. Linn. Soc. VIII, p. 172 (1864) for Sect. I. C.

2465. CATEPHIA *Thicophora* insert *Idicara* OLIVACEA, Walk. Journ. Linn. Soc. VII., p. 172, which has precedence.

CEYLON; BORNEO.

2544*a.* BOCUA EROTA, Swinh., A. M. N. H. (7), vii., p. 496 (1901).

♀. Head and thorax pale rufous; abdomen fuscous. Forewing pale rufous; an indistinct oblique waved antemedial line, an incurved medial line; a small black discoidal spot, an indistinct minutely dentate postmedial line angled outwards at vein 7 and above 1; the terminal area black, its inner edge oblique towards apex, then excised, then angled inwards on vein 7, then curved to tornus. Hindwing black-brown. Underside suffused with black; hindwing with discoidal spot; both wings with some pale points on termen.

Habitat.—ANDAMANS, Port Blair. *Exp.* 36 mill.

2546. *b.* BOCUA PLECOPTERIDIA, n. sp.

♂. Antennæ ciliated; abdomen normal.

Red-brown; palpi tinged with fuscous. Forewing with dark brown antemedial point on costa, a small medial spot and a postmedial lunule with faint traces of the rufous subterminal line arising from it, excurved between veins 6 and 4, then incurved. Hindwing with traces of rufous and dark brown subterminal line towards tornus; the underside greyer with indistinct medial and sinuous postmedial lines.

Habitat.—BOMBAY (Davidson). *Exp.* 30 mill. Type in B. M.

2563 *a.* ACANTHOLIPIS CRENELATA, n. sp.

♂. Palpi with large tuft of hair on 2nd joint above; frons with large tuft; tibiæ with thick fringes of hair, the hind tarsi fringed with long hair above; wings with the cilia highly crenulate; forewing with the termen angled at vein 4; hindwing on underside clothed with androconia between veins 7 and 2.

Head and thorax bright rufous; palpi and frontal tuft dark brown; abdomen brown tinged with rufous, the ventral surface and hind legs pale; wings bright rufous sparsely irrorated with black. Forewing with indistinct waved antemedial line bent outward below cell; traces of a medial waved line; two dark discoidal points; postmedial line minutely waved and with dark and white points at the veins, bent outwards below costa, excurved to vein 4, then incurved

and excurved again above inner margin; an indistinct waved subterminal line; a series of black points just before termen and a crenulate terminal line. Hindwing with black point at lower angle of cell; traces of a sinuous medial line, dentate postmedial line with dark and white points at the veins, a series of black points before termen and a crenulate terminal line; underside greyish with dark discoidal lunule and sinuous postmedial line.

Habitat.—TRAVANCORE, Pirmâd (R. S. Imray). *Exp.* 44 mill. Type in B. M.

PYRALINÆ.

CLEDEOBIA MOLBAVICA. *Exp.* subsp. with the ground color black-brown.

2564. a. ACANTHOLIPES RETRACTA, n. sp.

♀. Head and thorax grey mixed with some black; palpi blackish at sides; tarsi banded with black; abdomen grey mixed with fuscous brown. Forewing grey irrorated with black-brown; a subbasal black-brown spot on costa and small spot below the cell; an oblique antemedial band from costa to submedian fold expanding somewhat at extremities and with slight line from it to inner margin; a triangular spot on middle of costa; the postmedial line bent outwards below costa, angled inwards in discal fold and produced as a short fascia to discocellulars, incurved below vein 4 and with a diffused line on its inner side; some black striæ on costa towards apex; a dentate subterminal line angled inwards in discal and submedian folds; some brown suffusion on terminal area from apex to vein 4; a terminal series of blackish striæ. Hindwing fuscous brown, the cilia pale at tips; the underside pale, the costal and terminal areas irrorated with brown, a slight discoidal lunule.

Habitat.—CEYLON, Haputale (Mackwood). *Exp.* 30 mill. Type in B. M.

2564. b. ACANTHOLIPES BISIGNATA, n. sp.

♀. Head and thorax and abdomen ochreous white irrorated with brown; tarsi ringed with fuscous. Forewing ochreous white irrorated with brown; a conical brown antemedial patch on costa with traces of a line arising from it excurved below cell and angled inwards on vein 1; a semicircular brown medial patch on costa with brown oblique line arising from it, incurved in discal fold; a black point at lower angle of cell; a curved series of dark points on the veins also arising from the costal patch; some black striæ on costa towards apex; a pale minutely waved subterminal line defined on each side by brown and incurved at submedian fold; a brown patch on apical half of terminal area extending to inner side of subterminal line; a terminal series of small black spots. Hindwing pale ochreous suffused with brown, especially on terminal area; the underside whitish, the costal area irrorated with brown, a black discoidal spot, curved postmedial series of points, traces of a subterminal line, a terminal series of small black spots.

Habitat.—CEYLON, Haldamulla (Mackwood). *Exp.* 26 mill. Type in B. M.

P. 533. Under THERMESIA insert Sect. *Tiruvaca*, Swinh., A. M. N. H. (7), vii., p. 497 (1901) type.

Subcostalis. Forewing of male with the membrane in, beyond, above and below cell distorted, vein 2 strongly curved downwards, the lower angle of cell

produced, veins 3, 4, 5 approximated for some distance; hindwing with the basal half of costa lobed.

2592. *a.* THERMESIA BUTLERI, Leech, Trans. Ent. Soc., 1900, p. 570.

♂. Head, thorax and abdomen rufous; palpi except at base and frons black-brown; legs fuscous irrorated with grey; pectus and ventral surface of abdomen orange fulvous. Forewing rufous irrorated with black and tinged with purplish grey towards apex; an indistinct waved antemedial line; a black point in middle of cell and white point ringed with black above lower angle; medial line indistinct, waved, strongly excurved round end of cell; postmedial line indistinct, bent outwards below costa, then oblique; a prominent oblique rufous line from apex, defined by purplish grey on inner side and approximated to the postmedial line below vein 6, a series of slight fuscous spots beyond it and some fuscous suffusion at middle. Hindwing rufous slightly irrorated with black; an oblique rufous postmedial line defined by purplish grey on inner side; traces of a subterminal series of diffused fuscous spots. Underside orange yellow irrorated with brown; forewing with fuscous point in cell; both wings with fuscous discoidal point slightly waved oblique postmedial line and diffused subterminal line.

♀. Greyer; forewing with discoidal lunule defined by fuscous.

The Khasi form has the area beyond the subterminal spots of hindwing yellow.

Habitat.—W. CHINA, Chow-pin-sa, Kwei-chow, Omei-shan; ASSAM, Khasis. *Exp.* ♂ 64, ♀ 56 mill.

2601. THERMESIA RIVULOSA insert (syn.) *Acantholipes quadripuncta*, Swinh., A. M. N. H. (7) ix, p. 423 (1902).

2606. *a.* PLATYJA MINUTIPUNCTA, Swinh., A. M. N. H. (7), vii., p. 497 (1901).

Dark brown shot with purple especially on forewing; tarsi ringed with white. Forewing sparsely irrorated with grey-white scales; traces of a subbasal white line from costa to submedian fold; the antemedial line represented by white points on costa, median nervure, and vein 1; white points in middle and end of cell and a small spot at upper angle and medial white points on veins 2 and 1; a postmedial series of points excurved below costa, then oblique and with a grey reniform spot on its inner side from vein 3 to below 2; a terminal series of points. Hindwing with curved postmedial series of white points obsolescent towards costa and a terminal series; cilia white at tips. Underside of both wings in male velvety black with indistinct postmedial series of points, of female brown irrorated with white with the series of points distinct.

Habitat.—ASSAM, Jaintia Hills; SINGAPORE. *Exp.* 60 mill.

2611. CRITHOTE HORRIDIPES, Wlk.

♀. Head and thorax reddish brown with darker irroration, the back of head and tips of tegulæ black; abdomen brown tinged with fuscous. Forewing with the basal half reddish brown tinged with fuscous on costal area; antemedial line oblique, curved inwards to costa with a black patch on its outer

edge from cell to inner margin strongly excurved above vein 1 and edged with white; a black point in middle of cell; the terminal half fuscous black, deep black, except on costal area, towards the medial white line which is oblique from subcostal nervure to submedian fold; postmedial line, subterminal and terminal whitish points as in male. Hindwing brown suffused with fuscous.

2649. *a.* CALPE NUBIFERA, n. sp.

♀. Head and thorax ochreous mottled with brown; palpi tinged with fulvous; abdomen ochreous. Forewing brownish ochreous thickly mottled with dark olive-brown; traces of three oblique lines on basal area; a more distinct diffused very oblique medial line; an oblique pale ochreous subterminal line arising from termen just below apex and strongly excurved at middle. Hindwing ochreous tinged with rufous brown especially towards termen.

Habitat.—S. INDIA, Rajahmahendri (Bird.) *Exp.* 32 mill. Type in B. M.

Under MECODINA insert *Bathanta*, Wlk. XXXIII., p. 82 (1865). Type *bisignata* for Sect. VI.

2706. *b.* MECODINA CERULEOPARSA, n. sp.

♂. Head and thorax dark olive-brown irrorated with blue-white; tarsi black ringed with white; abdomen fuscous mixed with grey. Forewings black-brown with an olive tinge; a slight blueish white subbasal line from costa to submedian fold, with some blue-white irroration between it and the fine sinuous antemedial line which is angled outwards below costa; a white point in middle of cell; a medial band of blueish white irroration followed by an indistinct wavy and curved black medial line; postmedial line blueish-white, excurved from below costa to vein 4, then incurved and angled outwards at vein 1, a band of blue-white irroration before it from costa to vein 6 and patches beyond it below costa and from vein 3 to inner margin; a sinuous subterminal line strongly incurved and obsolescent near vein 3 and with pale brown spots on it at discal and submedian folds and slight marks above the former, the area beyond it irrorated with blue-white from costa to vein 5; cilia with some white at tips. Hindwings fuscous; a fine white medial line with some white irroration beyond it towards tornus; an indistinct brownish subterminal line except towards costa, slightly defined by blackish on inner side; a fine pale line at base of cilia; the underside with the basal half suffused with white, a dark antemedial line bent outwards at middle; a minutely wavy white medial line, an interrupted sinuous subterminal line.

Habitat.—ASSAM, Khasis. *Exp.* 34 mill. Type in B. M.

2708. Will stand as MECODINA PLACIDA Hmps. (nec. Moore).

2717. MECODINA *precipua*, insert *Bathanta BISIGNATA*, Wlk., XXXIII., 983 (1865) which has precedence and *ctypana bocanidia*, Butl. A. M. N. H. (5), x. p. 231 (1882). = the *turbida* form.

PERAK; SIAM; BORNEO; PULO LAUT; JAVA; TIMOR; NEW GUINEA; DUKE OF YORK I.

2725. *a.* ZETHES ENIGMARIA, Swinh., A. M. N. H. (7), xv., p. 161 (1905).

Head, thorax and abdomen fuscous, the ventral surface mostly ochreous. Forewing ochreous entirely suffused with greyish fuscous, the costal area greyer; subbasal line represented by a dark striga from costa; antemedial line waved, bent inwards to costa; orbicular and reniform round ochreous spots defined by fuscous, the former small, the latter with dark lunule in centre; medial line indistinct, excurved round reniform; postmedial line excurved from costa to vein 4, then incurved, some greyer suffusion beyond it on costal area followed by two ochreous points; subterminal line indistinct, minutely waved, with some ochreous beyond it at apex and above tornus and before it above middle. Hindwing ochreous, the basal and postmedial areas and a patch on middle of terminal area fuscous; the basal area bounded by a waved line, the postmedial by a waved line on inner side and a dentate line angled outwards at middle on outer; a fine slightly waved terminal line. Underside ochreous irrorated with fuscous; forewing with some dark suffusion beyond postmedial line except on costal area and a dark mark on costa with two pale points on it before apex; hindwing with oblique antemedial line, discoidal bar and postmedial band.

Habitat.—ASSAM, Khasis. *Exp.* 32 mill.

2734. EGNASIA COSTALIS.

♀. Forewing with the costal area suffused with black; the subterminal line of both wings dark.

2737. ZETHES NIGRILINEA insert (syn.) *Zethes ochroides*, Swinh., A. M. N. H. (7), iii., p. 115 (1899).

2740. *b.* ZETHES MULTIPLAGA, Swinh., A. M. N. H. (7), vii., p. 498 (1901).

♀. Brownish white irrorated with dark scales; vertex of head with two small olive green spots. Forewing with indistinct waved subbasal line with olive-green spot below costa between it and the double waved antemedial line; a dusky medial line angled outwards in cell round the olive-green somewhat triangular spot in end of cell, a pale sinuous postmedial line angled outwards below costa and with small olive-green spots on each side of it between veins 7 and 2; a waved dusky subterminal line defined by white on inner side and dentate inwards below costa and at discal and submedian folds; a series of black points before termen and a crenulate terminal line. Hindwing with pale incurved antemedial line with olive green band beyond it between the cell and inner margin; an irregularly dentate dusky subterminal line defined by white on inner side and with olive-green spots before and beyond it near tornus; a series of dark points before termen and a crenulate terminal line.

Habitat.—ASSAM, Jaintia Hills. *Exp.* 38 mill.

2741. *a.* ZETHES CASTANITIS, n. sp.

♂. Chestnut with a yellow tinge; head and thorax suffused with white; palpi in front, tarsi and extremity of abdomen dark brown and white. Forewing with slight whitish suffusion on costa; an oblique dark subbasal striga from costa; a waved antemedial line angled outwards below costa; orbicular small,

round, grey with slight dark centre and defining line; reniform a narrow dark lunule with greyish centre; medial line waved, bent outwards round end of cell; postmedial line indistinct, waved, bent outwards below costa and excurved at middle, the costa beyond it dark with white points; a nearly straight grey and white subterminal line from just before apex to just before tornus; cilia dark brown with greyish line through them from vein 3 to tornus. Hindwing with waved antemedial and medial dark lines; the postmedial line grey defined on each side by black, nearly straight from apex to tornus but dentate on outer side at veins 6, 4, 3; a terminal black line from vein 3 to tornus; cilia brown and grey, yellowish white in the excisions towards tornus. Underside yellower.

Habitat.—ASSAM, Silchar. *Exp.* 40 mill. Type in B. M.

2769. *a.* DIOMEA PAGANA, Swinh., A.M.N.H. (7), vii., p. 495 (1901).

♂. Mid tibiæ with tufts of long reddish hair from base; wings with the termen crenulate.

Head, thorax, and abdomen dark brown mixed with grey; pectus and ventral surface of abdomen grey; wings fuscous brown suffused with grey. Forewing with diffused black patches on basal area and on costal area at middle and before apex; traces of a curved antemedial line and of a waved postmedial line angled at vein 4, then oblique; a series of points before termen. Hindwing with diffused antemedial black patch and a series of points before termen; the underside greyer; a discoidal spot with line from it to inner margin; a postmedial line on inner area and traces of a diffused subterminal band.

Habitat—ASSAM, Jaintia Hills. *Exp.* 40 mill.

No. 2781. DIOMEA (*Raparna*) MULTIFASCIATA.

♂. Fore and mid tibiæ thickly clothed with rough hair, hind tibiæ smoothly scaled; four legs with a tuft of long ochreous hair from joint of coxa and femur and mid legs with a tuft of long pink hair from outer side of femero-tibial joint.

2772. *a.* RAPARNA MARGINALIS, Wlk., XXXIII., 802 (1865).

Rhodaria formosalis, Wlk., XXXIV., 1284 (1865).

Head and tegulæ crimson; thorax and abdomen ochreous. Forewing ochreous; crimson costal fascia; a crimson fascia on inner margin not extending to base; terminal area crimson, broad at inner margin, narrowing to a point below apex. Hindwing pale ochreous, the terminal area suffused with fuscous in male, wholly suffused with fuscous except at base in female.

Habitat.—CEYLON, W. Haputale (Mackwood); AUSTRALIA. *Exp.* 26 mill.

2782. *a.* RAPARNA PURPUREO-RUFA, n. sp.

♂. Dark purplish red, palpi and wings irrorated with black, the former with the tips of 2nd and 3rd joints white; antennæ brown, ringed with white towards base; tarsi ringed with white, abdomen fuscous with whitish segmental lines. Forewing with indistinct subbasal and antemedial pale lines defined by black, angled below costa, then oblique and minutely waved; two black-edged whitish discoidal points; the postmedial line with an obliquely curved pale

mark from costa, strongly angled at vein 7, then oblique, dark edged with grey scales and bisinuate; two white points on costa towards apex; an irregularly sinuous subterminal line with some grey scales on it and strongly excurved at middle; a series of black points just before termen. Hindwing with two black discoidal points; an oblique grey medial line with dark inner edge and fine black line through it; a series of black points just before termen; both wings with fine grey line through the cilia. Underside largely suffused with grey.

Habitat.—CEYLON, Pundaloya (Green), *Exp.* 28 mill. Type in B. M.

2785. *AVITTA SUBSIGNANS* insert (syn.) *Avitta surrigens*, Wlk. J. Linn. Soc.; Zool. VII., p. 81 (1864).

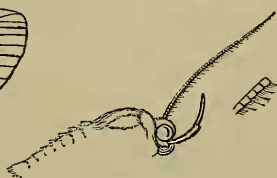
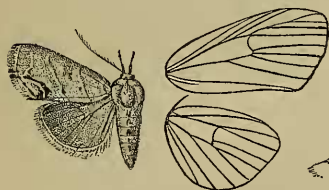
HYPERENTÆ.

Genus *CODONODES*, nov.

Palpi upward, sickle-shaped, about four times length of head, the 2nd joint smoothly scaled, the 3rd naked; antennæ of male with cilia and bristles; tibiæ with the spurs long, abdomen with dorsal crests. Forewing with veins 3 and 5 from near angle of cell; 6 from upper angle; 7·8·9 stalked, 10·11 free. Hindwing with veins 3·4 shortly stalked, 5 from above angle of cell; 6·7 from upper angle.

2792. *a.* *CODONODES RECTIGRAMMA*, n. sp.

Head and thorax reddish-brown mixed with grey; tarsi with pale rings; abdomen dull brown.



Forewing whitish suffused with reddish brown, deepening at costa; a slight grey subbasal line from costa to submedian fold angled

Codonodes rectigramma ♂ ♀.

glad outwards below costa; a straight oblique brown antemedial line defined by whitish on outer side and with a brown point on its outer edge in submedian fold; a brown and grey discoidal bar; postmedial line defined by whitish on outer side, excurved below costa, then oblique, slightly excurved and with brown point on its inner edge in submedian fold; subterminal line whitish, angled outwards to termen at vein 4, then incurved and with irregular black marks on its inner side from vein 6 to inner margin; a terminal series of black points and a blackish patch at tornus.

Habitat.—SIKHIM (Dudgeon), CANARA, Karwar (T. R. Bell). *Exp.* ♂ 22, ♀ 24 mill. Type in B. M.

2803. *a.* *ADRAPSA ATRATALIS*, Swinh., A. M. N. H. (7), xv., p. 501 (1095).

„ *curiosalis*, Swinh. A. M. N. H. (7), xv., p. 162, ♀ (nec ♂).

Fuscous black, slightly irrorated with white; tegulæ reddish brown at tips in male; tarsi with pale rings. Forewing with slight waved white antemedial line; a white discoidal lunule; a minutely waved white postmedial line, bent inwards to costa and angled inwards in submedian fold; subterminal line

white and prominent at costa, then merged in a quadrate white patch from below apex to below vein 5, then reduced to points; cilia chequered with white on apical half. Hindwing with waved white medial line from vein 5 to inner margin; an interrupted waved white subterminal line from vein 6 to tornus; cilia fuscous and whitish, the underside strongly irrorated with white, waved dark antemedial, medial and subterminal lines, the two latter defined by whitish on outer side.

Habitat.—W. CHINA, Chow-pin-sa; ASSAM, Khasis. *Exp.* 46 mill.

2804. *a.* ADRAPSA CURIOSALIS, Swinh., A. M. N. H. (7), xv., p. 162 (1905).

♂. Palpi with tufts of hair on inner side of 2nd and 3rd joints, antennæ with bristles and cilia, the basal half of shaft fringed with hair above; fore femora with large tuft of hair from base.

Fuscous black, slightly irrorated with whitish; tegulæ tipped with ochreous. Forewing with slight subbasal striga from costa; a sinuous antemedial line; a white point in middle of cell and elliptical discoidal spot; an indistinct post-medial line defined by paler color on outer side and angled outwards below costa and at vein 4; a minutely waved subterminal line, white and distinct on costal half, angled slightly outwards at vein 7, incurved and forming a white lunule at discal fold, incurved below vein 4 with an ochreous white patch beyond it from below apex to vein 5; cilia chequered fuscous and ochreous white. Hindwing with minutely waved medial and post medial lines defined by whitish on outer side; cilia chequered fuscous and ochreous; the underside thickly irrorated with white, a white discoidal bar, the lines more distinctly defined.

Habitat.—ASSAM, Khasis. *Exp.* 36 mill.

2825. BLEPTINA PRUNOSA. Antennæ of male with large tuft of scales on middle of shaft.

2827. BLEPTINA OCHREISTIGMA. ♂. Palpi not recurved or tufted with hair; antennæ with a tuft of scales on middle of shaft; fore tibiæ without sheath.

2834. *b.* MASTIGOPHORUS PLACIDA. Moore. *Lep. Atk.*, p. 194.

♀. Head and thorax dark red-brown; abdomen fuscous brown. Forewing dark red-brown suffused with purple-grey; a minutely waved antemedial line; a blackish discoidal lunule on traces of an oblique medial line; a minutely waved oblique postmedial line slightly excurved at middle; an indistinct irregularly waved subterminal line with paler brown marks on its inner edge. Hindwing dark brown, the inner area suffused with purple-grey; indistinct minutely waved medial and subterminal lines.

Habitat.—Sikhim. *Exp.* 40 mill.

2840. *d.* FALCIMALIS DIACIA, Swinh., A. M. N. H. (7), xv., p. 163 (1905).

Head and thorax ochreous whitish; palpi to near end of 2nd joint and at extremity of 3rd, sides of frons, tegulæ and base of patagia dark brown; fore tibiæ and the tarsi with dark bands; abdomen ochreous tinged with fuscous. Forewing pale ochreous; a triangular black-brown patch at base of costa;

antemedial line angled outwards below costa, then oblique; the medial area suffused with brown and with an oblique black-brown wedge-shaped patch from the costa to angle of postmedial line with a rather conical black discoidal spot on it; postmedial line very oblique to vein 4 where it is angled, obliquely curved to vein 3, then retracted to below angle of cell; some black and white points on costa towards apex; a whitish subterminal line, incurved below vein 4, crossed by a wedge-shaped black shade from termen below apex to above angle of the postmedial line; a terminal series of small black spots; cilia fuscous with whitish points. Hindwing pale fuscous; the underside whiter with traces of diffused postmedial and subterminal bands.

Habitat.—ASSAM, Khasis. *Exp.* ♂ 20, ♀ 22 mill.

2848. *a.* HYDRILLODES SUBFLAVALIS, n. sp.

♂. Palpi with the 2nd and 3rd joints slightly fringed with hair in front, the 3rd joint long fringed with hair behind; fore femora and tibia fringed with hair on inner side; abdomen with protusible lateral tufts of hair from base and large anal tuft; fore and hindwings on underside with the base clothed with long yellow hair, on latter extending to lower angle of cell and on inner margin to near tornus.

Head, thorax and abdomen fuscous, the last with some ochreous. Forewing fuscous; an indistinct waved dark antemedial line arising from a pale point on costa; traces of a medial line with pale point at costa; a small black discoidal lunule; postmedial line slightly defined by grey on outer side, waved; a fine minutely waved whitish subterminal line, slightly excurved at vein 7 and middle; a terminal series of black points; a fine pale line at base of cilia. Hindwing pale fuscous; a dark discoidal lunule; indistinct curved postmedial and subterminal lines; a fine white line at base of cilia; the underside whitish with some dark irroration, the discoidal lunule black, the lines distinct and diffused.

Habitat.—CEYLON, N. C. Province (J. Pole). *Exp.* 24 mill. Type in B. M.

2858. *b.* NODARIA PRODUCTA, n. sp.

Purplish-brown; abdomen with slight dark segmental lines. Forewing irrorated with black scales; the veins with slight dark streaks; a short subbasal line angled below costa; the antemedial line angled below costa, then slightly incurved; a discoidal striga; the postmedial line very oblique from costa to vein 5 where it is acutely angled, then retracted to below end of cell at vein 2 where it is obtusely angled, then bent outwards to inner margin; a strong slightly incurved line from apex to inner margin before tornus; a fine terminal line. Hindwing irrorated with black; a slight discoidal striga; a fine postmedial line obtusely angled at vein 5 then sinuous; a strong subterminal line defined by whitish on outer side and obtusely angled at vein 2; a fine terminal line.

Habitat.—CEYLON, Pundaloya (Green), Puttalam (Mackwood). *Exp.* ♂ 28, ♀ 32 mill. Type in B. M.

2875. *a.* CATADA COSTIPUNCTATA, n. sp.

♂. Pale ochreous; palpi with the 1st and 2nd joints and frons black; fore tibiae blackish, joints of legs with black rings; abdomen irrorated with black;

wings strongly irrorated with fuscous. Forewing with black points on costa and large ante and postmedial spots; a prominent discoidal spot; the termen with waved black line, and two excisions below apex. Hindwing with discoidal black spot and terminal series of lunules. Underside of forewing largely suffused with black.

Habitat.—CEYLON, Pundaloya (Green). *Exp.* 14 mill. Type in B. M.
2877. *b.* CATADA NIGRIPUNCTA, n. sp.

♂. Ochreous; head irrorated with black and red scales; palpi with black bands at extremity of 1st and 2nd joints and at middle of 3rd; tegulæ and metathorax with patches of black and red scales; abdomen dorsally irrorated with a few red scales, black points on 2nd, 4th and 6th segments and a larger spot on terminal segment. Forewing irrorated with a few dark scales below costa; five black points on costa; a diffused spot above base of inner margin; traces of waved antemedial, medial, and postmedial red lines and of a blackish subterminal line with two black spots before it below costa and a large round spot at middle; a terminal series of black points and spots on termen and cilia at apex and middle. Hindwing with traces of antemedial, medial and postmedial waved red lines and of a black discoidal point; an indistinct waved blackish subterminal line; a terminal series of black spots.

Habitat.—CEYLON, Matelé (Pole). *Exp.* 16 mill. Type in B. M.
2885. *a.* CATADA HEMIPHÆA, n. sp.

♂. Head and thorax dark brown mixed with grey; pectus and legs whitish, the tarsi black tinged with white; abdomen grey irrorated and suffused with fuscous and with dorsal black crests on 2nd and 3rd segments, the ventral surface whitish. Forewing grey, the basal area suffused with black-brown deepening to the medial line which is white, slightly sinuous and oblique from costa to above vein 1; traces of a waved subbasal line and oblique antemedial line; the terminal area irrorated and suffused with fuscous; a slight pale discoidal lunule, some whitish points on costa towards apex; an indistinct pale sinuous subterminal line with some dark suffusion before it towards costa; a fine black terminal line; cilia fuscous with a series of white points. Hindwing fuscous brown; the underside grey thickly irrorated with fuscous leaving an ochreous white patch from below end of cell to near termen.

Habitat.—MADRAS, Bellary, Ramandrug, 3,000' (Campbell). *Exp.* 20 mill. Type in B. M.

Genus. ARÆOPTERON.

A. Frons black or dark brown.

- a.* Forewing with oblique white postmedial line from below costa to inner margin*fascialis*.
- b.* Forewing without oblique white postmedial line.
 - a*¹. Forewing with the costal and postmedial areas pure white.
 - a*². Forewing white*nivalis*.
 - b*². Forewing largely suffused with rufous*proleuca*.
 - b*¹. Forewing with the costal and postmedial area grey.

- a*². Hindwing suffused with bright rufous except terminal area *pictalis*.
*b*². Hindwing not suffused with rufous.....*griseata*.

B. Frons concolorous.

- a*¹. Hindwing without discoidal tuft of fulvous scales*goniophora*.
*b*¹. Hindwing with discoidal tuft of fulvous scales.....*xanthopis*.

2887. *b*. ARÆOPTERUM NIVALIS, n. sp.

♂. White; palpi and frons tinged with fuscous. Forewing with subbasal and antemedial black points on costa, the latter with a faint obliquely curved brown line arising from it; a black discoidal point with another above it on costa with the faint brown postmedial line arising from it, bent outwards below costa, then waved; a series of black points on costa with a brown spot before them above the discal fold; cilia brownish. Hindwing slightly irrorated with brownish; a brown medial band with black spot at costa and point at inner margin; faint traces of a curved postmedial line; cilia brownish.

Habitat.—CEYLON, Peradeniya (Green). *Exp.* 10 mill. Type in B. M.

2887. *c*. ARÆOPTERON PROLEUCA, n. sp.

Head and thorax white; palpi and frons brown, the former banded with black; abdomen red-brown. Forewing pure white more or less suffused with red-brown and fuscous except on costa and postmedial areas; the costa with series of red-brown marks with white points on them; subbasal line represented by a black point on costa; the antemedial line oblique, waved, more or less interrupted; a black discoidal lunule with striga on costa above it; a waved postmedial line incurved below cell; subterminal line only defined by the area beyond it being fuscous except at apex, angled outward at middle; a terminal series of black points. Hindwing white at base, then fuscous, with a black discoidal spot, to the postmedial black line which is incurved to costa, then white; the terminal area pale rufous irrorated with fuscous and with indistinct sinuous white subterminal line.

Habitat.—BENGAL, Calcutta (Atkinson); CEYLON (Pole). *Exp.* 12 mill.

2887. *d*. ARÆOPTERON GRISEATA, n. sp.

Head and tegulæ white; palpi and frons black; thorax grey; abdomen fuscous. Forewing grey irrorated and suffused with brown; subbasal line represented by a black point on costa, the antemedial line by a black point on costa and an oblique sinuous more or less complete brown line; a rather V-shaped black mark on discocellulars with a black and orange mark above it on costa and an oblique line from it to inner margin; subterminal line indistinct, grey with a blackish patch with white points on it before it on costa, incurved at discal fold where there is a blackish mark before it, again incurved at submedian fold, the area beyond it rather darker, a terminal series of black points. Hindwing grey, suffused and irrorated with brown; a black discoidal point with some blackish suffusion near it; an ill-defined sinuous black postmedial line; a very indistinct sinuous grey subterminal line with area beyond it rather darker; termen fulvous yellow with a series of black points; cilia brown and grey.

Habitat.—CEYLON, Peradenya, Nawala Pltiya (Green); Hambantota. Puttalam (Pole). *Exp.* 10-11 mill. Type in B. M.

2887. *e.* ARÆOPTERON GONIOPHORA, n. sp.

Head, thorax and abdomen grey mixed with brown, the last tinged with reddish brown. Forewing grey irrorated and suffused with brown; the subbasal line represented by a black point on costa, the antemedial line by a triangular brown mark on costa with oblique somewhat sinuous line from it to inner margin; a black discoidal spot with triangular brown mark above it on costa and oblique line from it to inner margin; an indistinct postmedial line obliquely curved from costa to vein 3 where it is sharply angled, then incurved; subterminal line grey defined on each side by brown, obliquely curved from costa to vein 4, incurved at submedian fold; a terminal series of dark-brown points. Hindwing grey suffused with red-brown and irrorated with fuscous; a black discoidal spot with diffused black between it and inner margin; a sinuous black postmedial line; the terminal area darker with a terminal series of black points.

Habitat.—CEYLON, Nawalapitiya (Green), Hambantota (Pole). *Exp.* 12 mill. Type in B. M.

2887. *f.* ARÆOPTERUM XANTHOPIS, n. sp.

♂. Head and thorax whitish slightly tinged with rufous; abdomen with the basal segment whitish tinged with rufous, the terminal segments black, the anal tuft white. Forewing leaden grey partly suffused with black to the postmedial line; the basal inner area whitish; an indistinct curved, waved, black antemedial line; a black discoidal point with diffused band from it to inner margin; an outwardly oblique postmedial line, slightly angled inward at vein 3; terminal area whitish with some blackish points on costa; a conical fulvous subterminal patch on costa; some terminal dark points. Hindwing with the basal area whitish with some black subbasal scales on it, the rest of wing leaden grey with diffused black band on its inner edge; a small fulvous discoidal tuft of scales; a diffused black subterminal band.

Habitat.—CEYLON, Haldamulla (Mackwood). *Exp.* 12 mill. Type in B. M.

2894. *b.* TALAPA BIRTHAMA, Swinh., A. M. N. H. (7), xv., p. 161 (1905).

♀. Head, thorax and abdomen grey irrorated with fuscous; palpi blackish towards base, forewing ochreous greyish irrorated with fuscous brown; the costa and medial area except below costa suffused with brown; a velvety black triangular subbasal patch between cell and inner margin, bounded by the sinuous yellowish antemedial line which is obsolete in cell; excurved and brown defined by yellowish on inner side at costa; a black point in middle of cell; an inverted comma-shaped white mark on a rounded black patch at lower angle of cell; traces of a waved medial line; postmedial line angled outwards below costa, then oblique, sinuous, black and prominent, some brown suffusion beyond it extending to apex and to termen at middle; a faint waved whitish line just beyond the postmedial line and a similar subterminal line incurved near discal and submedian folds and with oblique black streak beyond it from apex and spot before it above vein 6; a waved brown terminal line. Hindwing

fuscous brown ; the underside greyish thickly irrorated with brown, a discoidal lunule, faint, curved medial line and more distinct postmedial line shewing through to upperside.

Habitat.—ASSAM, Khásis. *Exp.* 36 mill.

2903. Should stand as *MARAPANA RUBRIPUNCTALIS*.

2903. *a.* *MARAPANA MINORALIS*, n. sp.

Differs from *M. rubripunctalis* in being smaller. Forewing with the postmedial line very minutely waved ; hindwing with the postmedial line sinuous, not waved ; both wings with the lunules at base of cilia black, not crimson.

The medial and postmedial areas of forewing are sometimes suffused with rufous or the medial area has a black patch on inner half.

Habitat.—CEYLON, Maturata, Puttalam, Uva (Mackwood, Green, Pole, Alston). *Exp.* 18-20 mill. Type in B. M.

2903. *b.* *MARAPANA LACTIGUTTA*, n. sp.

♂. Head, thorax and abdomen purplish red-brown mixed with some black ; palpi and frons mostly black ; pectus and ventral surface of abdomen whitish ; anal tuft rufous. Forewing purplish red-brown ; a black patch at base of costa enclosing a spot of the ground colour, a small spot on inner margin ; a black spot with white centre at middle of cell with a black patch above it on costa ; an ill-defined quadrate patch on discocellulars ; postmedial line black, diffused, with some white lunules on its outer edge and prominent patch in submedian interspace, bent outwards below costa, excurved to vein 4, then incurved ; subterminal line very indistinct, pale, with black patch before it at costa and slight black spots on its outer edge, angled outwards at vein 7 and excurved at middle ; a terminal series of black points. Hindwing with some fuscous suffusion at middle forming a very ill-defined band ; an indistinct curved postmedial series of dark points and a prominent terminal series.

Habitat.—CEYLON, Maskeliya (J. Pole). *Exp.* 24 mill. Type in B. M.

2905. *a.* *MARAPANA OLIVESCENS*, n. sp.

♀. Head and thorax whitish mixed with olive-green ; abdomen whitish ochreous, sometimes with some blackish dorsal marks. Forewing whitish tinged with ochreous and pink and on costal area with olive-green ; an obliquely curved olive-green antemedial band from subcostal nervure to inner margin ; an obscure dark-edged whitish discoidal lunule with black point at lower angle of cell and traces of a waved line from it to inner margin ; the postmedial line pale, oblique, and with olive green above it from costa to vein 4 where it is strongly angled, then obsolescent ; an indistinct pale lunulate subterminal line, strongly angled at vein 5 and with black streak from its angle extending into cilia ; a series of short black striæ just before termen ; some black points on cilia below apex ; the termen excurved below apex and sharply angled at vein 4. Hindwing purplish pink with slight dark discoidal spot ; traces of a sinuous postmedial line ; the termen crenulate with a fine dark line.

Habitat.—WYNAD (Cardew) ; CEYLON, Corigama (Mackwood). *Exp.* 30 mill. Type in B. M.

2913. *a.* RHYNCHINA FERREIPARS, n. sp.

Head, thorax and abdomen grey-brown. Forewing purplish grey; the post-medial line very sharply angled below costa where it is joined by a whitish streak from apex, then whitish and oblique to middle of inner margin, the area beyond it and the apical streak ferruginous with obscure diffused waved sub-terminal fuscous line. Hindwing fuscous brown; the cilia pale.

Habitat.—CHINA, Ichang; BOMBAY, Nasik (Davidson); Madras, Belgaum (Watson). *Exp.* 22 mill. Type in B. M.

2915. *a.* RHYNCHINA PALLIDINOTA, n. sp.

♀. Head and thorax whitish; palpi with dark streaks on second joint; fore and hind legs fuscous; the tarsi ringed with white; abdomen whitish tinged with fuscous. Forewing greyish fuscous; a creamy-whitish patch on base of inner area extending to middle, traversed by an oblique rufous line with a fuscous spot beyond it on inner margin and another rufous line near its outer edge; reniform stigma white, the orbicular indistinct with some raised black scales on and round it; the postmedial line indistinct, obliquely curved from costa to vein 3, then bent inwards to below middle of cell and erect to inner margin, its inner half with blackish streaks and tufts of scales; the apical part of costa whitish with slight dark streaks and some brown suffusion below it; traces of a subterminal line, angled at middle and with prominent dentate white and blackish marks on it towards inner margin; a fine dark crenulate terminal line. Hindwing whitish suffused with brown and with a dark terminal line.

Habitat.—SIKHM, 7000' (Pilcher). *Exp.* 34 mill. Type in B. M.

P. 76. Under HYPENA insert *Aphypena*, Swinh., A. M. N. H. (7), viii, p. 21, (1901), Type *dissimulans* and *Anepa*, Swinh., A. M. N. H. (7), xv., p. 502 (1905). Type *oxydata*.

2935. HYPENA ICONICALIS insert (syn.) *Bomolocha similis*, Swinh., A. M. N. H. (7), viii., p. 20 (1901) and *Bomolocha herpa*, Swinh., A. M. N. H. (7), viii., p. 20 (1901).

2941. *b.* HYPENA PHECOMALIS, Swinh., A. M. N. H. (7), xv., p. 164 (1905).

Dark brown; the hair of frontal tuft, tegulae and dorsal crests of abdomen grey at tips. Forewing with the postmedial area paler; an indistinct waved antemedial line; a dark spot in middle of cell; a brown postmedial line angled at vein 5, then incurved and slightly sinuous with diffused dark brown band on its inner side, traces of another line beyond it excurved between veins 6 and 4, then incurved and sinuous; a subterminal maculate line with some grey scales on its outer edge, excurved below costa, at middle, and above inner margin; a triangular terminal dark shade from apex to vein 2 extending to inner side of the second postmedial line; a series of grey points before the fine dark terminal line. Hindwing fuscous brown with fine dark terminal line and pale line at base of cilia. Underside irrorated with grey; forewing with two dark subapical points; hindwing with small discoidal lunule and curved post-medial and subterminal lines.

ab. 1. Forewing with the antemedial line on inner side, the postmedial and subterminal lines on outer side defined by violet blue.

Habitat.—ASSAM, Khàsis. *Exp.* 42 mill.

2955. a. *HYPENA CAMPTOGRAMMALIS*, n. sp.

♂. Head, thorax and abdomen dark-brown slightly mixed with grey. Forewing red-brown to the postmedial line; the costal area slightly irrorated with black; the terminal area dark-grey brown irrorated with blackish; the antemedial line indistinct, rufous, irregularly sinuous and angled outwards in submedian fold; small tufts of black and grey scales in middle and end of cell; an oblique streak of diffused black scales from median nervure at origin of vein 2 to postmedial line in submedian fold; the postmedial line rufous defined by grey on outer side sharply retracted to costa from vein 6, then oblique and with minute black dentitions in submedian interspace; an indistinct dentate subterminal line with dull rufous beyond it and two slight subapical black marks on it; a series of whitish and black terminal striæ; cilia blackish. Hindwing fuscous brown, with fine black terminal line; a discoidal lunule on underside.

Habitat.—CEYLON, Haputale (Mackwood). *Exp.* 28 mill. Type in B. M.

2955. b. *HYPENA SINUISIGNA*, n. sp.

♂. Dull grey-brown. Forewing with traces of antemedial line with tuft of black scales on it below the cell and angled above vein 1; a pale streak in submedian fold to the postmedial line; a small tuft of black scales in middle of cell and a somewhat V-shaped discoidal mark, the ground color blackish below end of cell and from thence to termen below apex; the postmedial line indistinct oblique sinuous, on an indistinct greyish band; a sinuous ochreous oblique streak from apex to near upper angle of cell, diffused towards costa and with slight dark marks above it; a terminal series of grey and black striæ. Hindwing fuscous brown with fine dark terminal line; the underside whitish tinged with brown towards costa.

Habitat.—CEYLON, Haputale (Mackwood). *Exp.* 30 mill. Type in B. M.

2955. c. *HYPENA RIVULA*, n. sp.

♀. Head, thorax and abdomen dark grey-brown; pectus, legs and ventral surface of abdomen whitish. Forewing dull reddish brown slightly irrorated with black; a diffused dark discoidal mark; postmedial line formed of black striæ defined by greyish on outer side, arising from costa towards apex, oblique, sinuous, excurved at middle; a subterminal series of black points excurved at middle. Hindwing dull reddish brown thickly irrorated with fuscous; the underside paler.

Habitat.—MADRAS, Bellary, Ramandrug, 3,000' (Campbell). *Exp.* 26 mill. Type in B. M.

2964. a. *HYPENA ÆNESCENS*, n. sp.

Brown mixed with grey; abdomen dull brown. Forewing with the basal half bronze green suffused with olive-brown scales; a waved olive-brown antemedial line; a black point in cell; a somewhat waved, slightly oblique olive-brown medial line defined by white on outer side; the terminal half purplish

grey suffused with brown, especially before the irregularly waved subterminal line, which is incurved below vein 3, and obliquely from termen below apex; a series of white points on apical half of costa and termen. Hindwing dark-brown with a fine dark terminal line; the cilia grey at tips. Underside of forewing with subapical white point; hindwing grey irrorated with brown; a brown discoidal point and curved postmedial and subterminal lines.

One specimen has the medial line of forewing excurved at the discocellulars and more waved below the cell; a black point at lower angle of cell.

Habitat.—CEYLON (Mackwood), Clodagh (Pole). *Exp.* 26 mill. Type in B. M. 2980, b. HYPENA DODA, Swinh., A. M. N. H. (7), ix., p. 180 (1902).

Head and thorax violaceous grey tinged with brown; tarsi fuscous with pale rings; abdomen grey irrorated with brown, the dorsal crests dark. Forewing violaceous grey tinged with red-brown and sparsely irrorated with black; an indistinct curved antemedial line sometimes reduced to a striga from costa and points on the veins; a small white spot in middle of cell ringed with brown; a dark discoidal point; a strong slightly oblique brown postmedial line usually with a more or less distinct fine line just beyond it followed by a series of minute dentate dark marks slightly bent outwards to costa and excurved at middle; a terminal series of black points and slight lunule above tornus; cilia with black mark at apex and two or three between the angle at vein 3 and tornus. Hindwing fuscous brown with terminal series of small dark lunules and fuscous marks on cilia; the underside grey tinged with brown and irrorated with dark-brown, a discoidal spot and postmedial line showing through to upperside.

Habitat.—SIKHIM; ASSAM, Khasis; PENANG; PERAK; FORMOSA. *Exp.* 30-34 mill.

2988, a. HYPENA TUMA, Swinh., A. M. N. H. (7), viii., p. 21 (1901).

Palpi with tuft on outer side of 3rd joint at base and no tuft on inner side.

Head and thorax reddish brown mixed with black; abdomen fuscous, the dorsal tufts tipped with black. Forewing purplish suffused with chestnut to the postmedial line; the antemedial line rufous, slightly angled outwards below costa, then very oblique to submedian fold at middle, then acutely angled inwards on vein 1; the medial area blackish above vein 2 with the tuft in middle of cell and a diffused spot in end of it blackish; postmedial line black defined by purple on outer side, erect and angled outwards in discal and submedian folds; the terminal area fuscous with a curved whitish mark from apex with two small black and white dentate marks above it and a series of less prominent similar marks between it and inner margin; some white points on costa towards apex and a terminal series of black and pale points. Hindwing fuscous brown with fine dark terminal line.

Habitat.—ASSAM, Jaintia Hills; SINGAPORE; BORNEO. *Exp.* 36 mill.

3008, d. PROLOPHOTA PERSTRIATA, n. sp.

♂. White; palpi blackish at sides; abdomen tinged with brown and with fulvous medial band. Forewing with black streak from near base through the

cell and discal fold to termen, interrupted by a point in middle of cell and slight discoidal bar; some yellow brown suffusion on terminal half, three subterminal black points towards apex and one above tornus. Hindwing slightly irrorated with brown; a black discoidal point; a yellow-brown medial band, angled below costa and with black line on its outer edge except towards costa; some brownish suffusion on terminal area and three diffused black spots at apex, discal fold and above tornus.

Habitat.—CEYLON, Hantone (E. E. Green). *Exp.* 10 mill. Type in B. M.

3016. a. RHÆSENA CHLOROCROTA, n. sp.

♀. Ochreous; palpi strongly irrorated with black; forelegs streaked with black. Forewing with patch of purplish silvery and fuscous scales at base; a streak of similar scales above median nervure and a discoidal patch with the black-edged reniform on it; a blackish streak in cell and discal fold to the subterminal line; an olive-green patch in end of cell; an olive-green streak beyond upper part of cell and an oblique series of short streaks before a purplish silvery obliquely curved postmedial line from vein 6 to submedian fold; an irregularly sinuous black subterminal line from vein 6 to inner margin, oblique between veins 4 and 2, with some olive-green on its inner side and fuscous irroration beyond it; some olive-green on termen and a crenulate black line just before termen; cilia greenish chequered with black-tipped grey scales. Hindwing suffused with fuscous on terminal area.

Habitat.—KANARA, Karwar (Davidson). *Exp.* 30 mill. Type in B. M.
